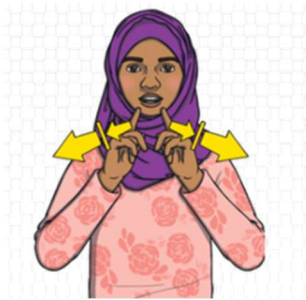


PEOPLE WHO ARE SPECIAL

TO ME

Have a think about the special people to you! Match the BSL sign with the name of that person (to do this you need to draw a line from the sign to the name).



Sister



Teacher



Friend



Brother



Father



Family



Mother

PEOPLE WHO ARE SPECIAL TO ME

Draw pictures or stick photos in the box below of 'People who are special to me.' Label the drawing or photos (or get an adult to help you.)

This could be:

- Friends
- Family
- Carers
- Teachers

